

PRINCIPAL DATA:

TYPE: GARTEC ASPEN LIFT

DRIVE SYSTEM: STATIC SCREW WITH ROTATING NUT

CAPACITY: 225KG

TRAVEL: VARIABLE (UP TO A MAXIMUM OF 12000)

NO OF STOPS: 2 SHOWN (UP TO A MAXIMUM OF 6 AVAILABLE)

SUPPLY VOLTAGE: 240V 1PH 50HZ (SINGLE PHASE AVAILABLE)

RUNNING CURRENT: 4.7AMP

STARTING CURRENT: 10AMP

STANDARD COLOUR: RAL 9003 WHITE

(OTHER RAL COLOURS AVAILABLE)

DOOR DATA:

TYPE: GLASS

NO OF DOORS: 2 SHOWN (UP TO A MAXIMUM OF 6 AVAILABLE)

FIRE RATING: NOT AVAILABLE

OPENING SIZE: 800 X 2000MM

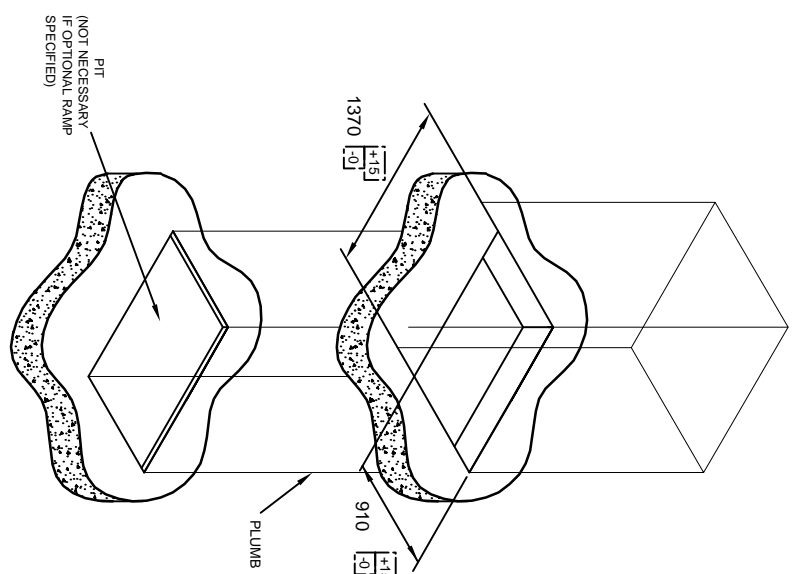
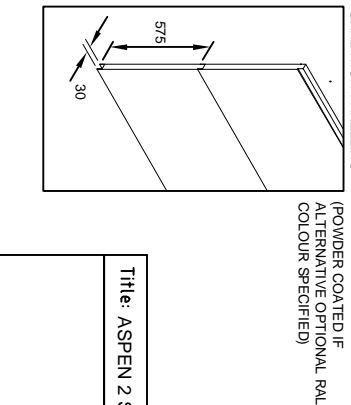
DOOR FRAME: INTEGRAL TO SHAFT ENCLOSURE

DOOR/FRAME COLOUR: WHITE POWDER COATED RAL 9003

DOOR GLASS: VARIABLE

CLOSER: MANUAL (AUTOMATIC VERSION AVAILABLE)

FURNITURE: FITTINGS IN ANODISED ALUMINIUM



The ASPEN 2 STOP LIFT

Drawn by R PRICE	Scale NTS	Date 19/06/09
Drawing No. SALES-500	Issue 2	